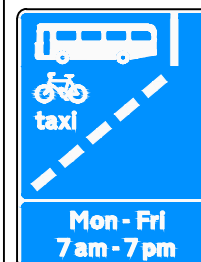


NOTES:

1. All dimensions in metres, unless otherwise stated.
2. All measurements shown on drawing to be confirmed on site by contractor prior to construction.
3. Existing road markings are indicative and setting out dimensions are approximate.
4. All lining and signing to be in accordance with Traffic Signs Regulations and General Directions 2016.
5. All existing signs and lines to be retained unless otherwise stated.



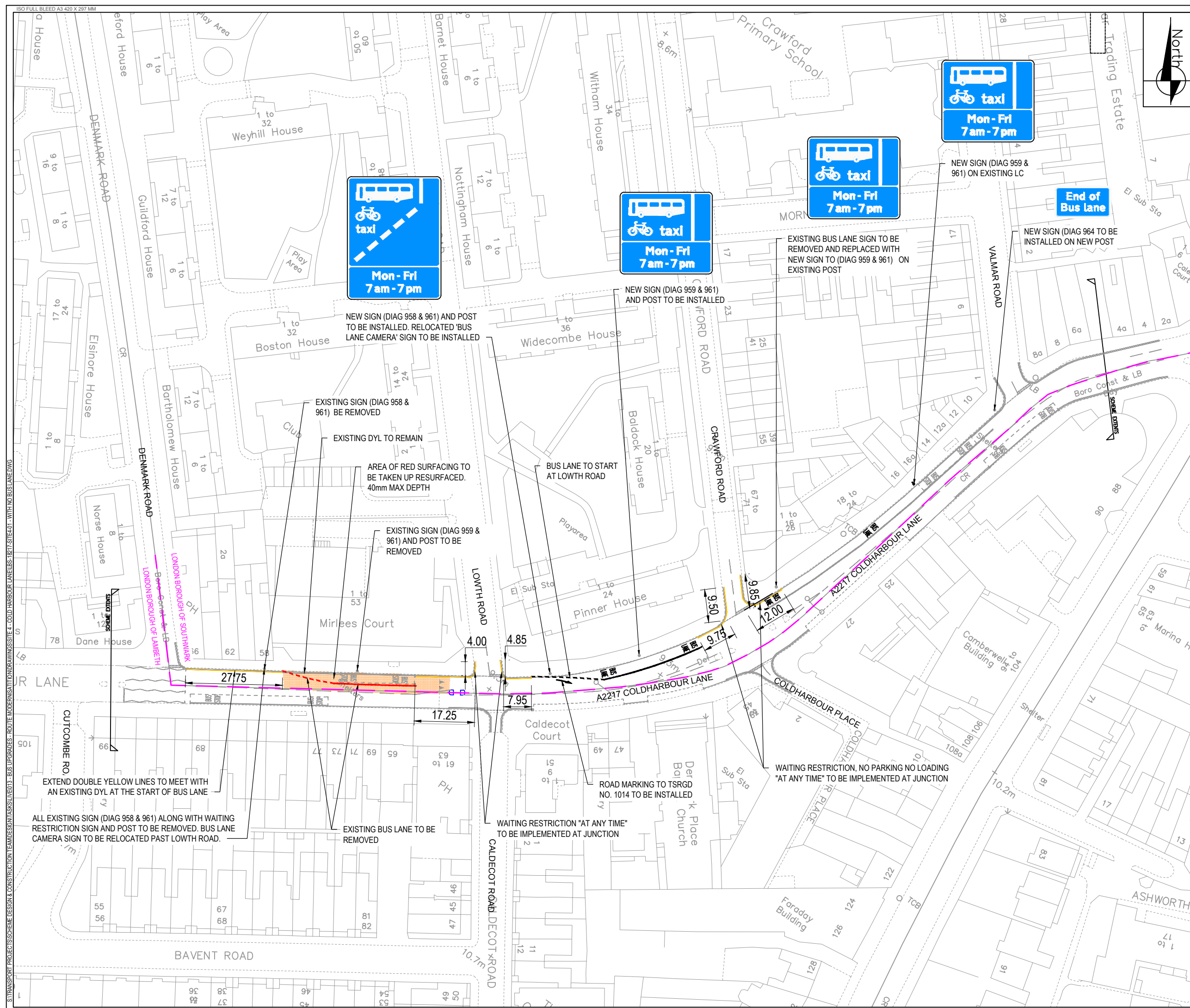
Scheme Ref:	Clayton Road / Peckham	Sign Ref:	Sign 1	h-height	50.0
Letter colour	WHITE	Sign Face	STANDARD	width	825mm
Background	BLUE	height	730mm	width	825mm
Border	WHITE	height	200mm	area	0.69m ²
Material	Class R38 Microprismatic	area	0.69m ²		



Scheme Ref:	Cold Harbour Lane	Sign Ref:	Sign 2	h-height	50.0
Letter colour	WHITE	Sign Face	STANDARD	width	825mm
Background	BLUE	height	730mm	width	825mm
Border	WHITE	height	200mm	area	0.69m ²
Material	Class R38 Microprismatic	area	0.69m ²		



Scheme Ref:	Cold Harbour Lane	Sign Ref:	Sign 3	h-height	50.0
Letter colour	WHITE	Sign Face	STANDARD	width	110mm
Background	BLUE	height	290mm	width	110mm
Border	WHITE	height	200mm	area	0.15m ²
Material	Class R38 Microprismatic	area	0.15m ²		



REV	DATE	REVISION DESCRIPTION / DETAILS	DRN BY	CHKD BY	APRVD BY



PROJECT:		ROUTE MODERNISATION PLAN COLD HARBOUR LANE	
TITLE:		RMP 476 - COLD HARBOUR LANE SITE 4 OUTLINE DESIGN	
STATUS:	DRAFT	DRAWN:	SC
SCALE:	1:500	DESIGNED:	SC
DRAWING NO.:	LBS/18217/SITE4/01	CHECKED:	SK
DATE DRAWN:	SEPT 2018	APPROVED:	RB
		REV:	A
		DATE ISSUED:	JAN 2019

S:\TRANSPORT PROJECTS\SCHHEME DESIGN & CONSTRUCTION\TRANSPORT\TASKS\LBS18217 SITE4-1 WITH NO BUS LANE.DWG